

## Untied Pump Flexible To Suit Steel Pipe Flanged PN16



Working Pressure:	6 Bar (600kPa)
Test Pressure:	1.5 x Working Pressure
Temperature Limits:	Minus 10° to plus 90°C

### Material Specifications:

EPDM rubber body with nylon reinforcement:  
steel collars are incorporated into all units.

Flanges: BZP Carbon Steel

### Details:

All units are designed using a highly durable EPDM rubber compound. All flanges fitted are designed specifically for these units and are manufactured from carbon steel which is bright zinc plated.

Size	Material Type	Installed Length
32	Nylon-Reinforced EPDM	130mm
40	Nylon-Reinforced EPDM	130mm
50	Nylon-Reinforced EPDM	130mm
65	Nylon-Reinforced EPDM	130mm
80	Nylon-Reinforced EPDM	130mm
100	Nylon-Reinforced EPDM	130mm
125	Nylon-Reinforced EPDM	130mm
150	Nylon-Reinforced EPDM	130mm

Pump Flexibles are installed to absorb vibration and reduce noise levels caused by "plant" upon which they are fitted. These are suitable for use on systems carrying Chilled and Hot Water.

## Tied Pump Flexible To Suit Steel Pipe Flanged PN16



Working Pressure:	10 Bar (1000kPa)
Test Pressure:	1.5 x Working Pressure
Temperature Limits:	Minus 10° to plus 90°C

### Material Specifications:

EPDM rubber body with nylon reinforcement:  
steel collars are incorporated into all units.

Flanges: BZP Carbon Steel

Tie Bars: BZP Carbon Steel

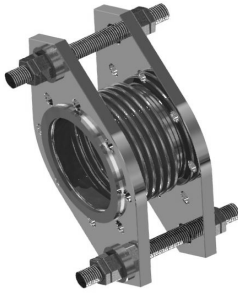
### Details:

The unit is unique due to its anti-tamper tie bars. All tie bars are fitted to installation lengths, and cannot be changed, thus decreasing the chance of elongation of the unit as a result of the tie bar loosening.

Size	Material Type	Installed Length
32	Nylon-Reinforced EPDM	130mm
40	Nylon-Reinforced EPDM	130mm
50	Nylon-Reinforced EPDM	130mm
65	Nylon-Reinforced EPDM	130mm
80	Nylon-Reinforced EPDM	130mm
100	Nylon-Reinforced EPDM	130mm
125	Nylon-Reinforced EPDM	130mm
150	Nylon-Reinforced EPDM	130mm
200	Nylon-Reinforced EPDM	130mm
250	Nylon-Reinforced EPDM	130mm

Pump Flexibles are installed to absorb vibration and reduce noise levels caused by "plant" upon which they are fitted. These are suitable for use on systems carrying Chilled and Hot Water.

## Stainless Pump Flexible To Suit Stainless Steel Pipe Flanged PN16



Working Pressure:	16 Bar (1600kPa)
Test Pressure:	1.5 x Working Pressure
Temperature Limits:	Minus 10° to plus 200°C

Size	Material Type	Installed Length	Forces To Compress
50	316 Stainless Steel	130	138.70 N/mm
65	316 Stainless Steel	130	134.40 N/mm
80	316 Stainless Steel	130	101.00 N/mm
100	316 Stainless Steel	130	158.10 N/mm
125	316 Stainless Steel	130	269.30 N/mm
150	316 Stainless Steel	130	276.10 N/mm
200	316 Stainless Steel	200	371.40 N/mm
250	316 Stainless Steel	200	264.90 N/mm

### Material Specifications:

Connections:	316 Stainless Steel
Convolutions:	316 Stainless Steel
Internal Sleeve:	316 Stainless Steel
Tie Rods:	316 Stainless Steel
Hemispherical Washers:	316 Stainless Steel
Connecting Spool:	316 Stainless Steel

Pump Flexibles are installed to absorb vibration and noise levels caused by "plant" upon which they are fitted.

These are suitable for use on systems carrying Chilled and Hot Water.

All units are supplied at installation lengths and pre stressed.

## Stainless Pump Flexible To Suit Steel Pipe Flanged PN16



Working Pressure:	16 Bar (1600kPa)
Test Pressure:	1.5 x Working Pressure
Temperature Limits:	Minus 10° to plus 200°C

Size	Material Type	Installed Length	Forces To Compress
32	316 S/Steel To Wet Areas	150	On Request
40	316 S/Steel To Wet Areas	150	On Request
50	316 S/Steel To Wet Areas	150	On Request
65	316 S/Steel To Wet Areas	150	On Request
80	316 S/Steel To Wet Areas	150	On Request
100	316 S/Steel To Wet Areas	150	On Request
125	316 S/Steel To Wet Areas	150	On Request
150	316 S/Steel To Wet Areas	150	On Request
200	316 S/Steel To Wet Areas	150	On Request
250	316 S/Steel To Wet Areas	On Request	On Request
300	316 S/Steel To Wet Areas	On Request	On Request

### Material Specifications:

Connections:	Carbon Steel Drilled PN16 Van-Stone Facings
Convolutions:	316 Stainless Steel
Internal Sleeve:	316 Stainless Steel
Tie Rods:	Carbon Steel
Hemispherical Washers:	Carbon Steel
Connecting Spool:	316 Stainless Steel

Pump Flexibles are installed to absorb vibration and noise levels caused by "plant" upon which they are fitted.

These are suitable for use on systems carrying Chilled and Hot Water.

All units are supplied at installation lengths and pre stressed.