



# BARNVALE

DESIGN AND INNOVATION

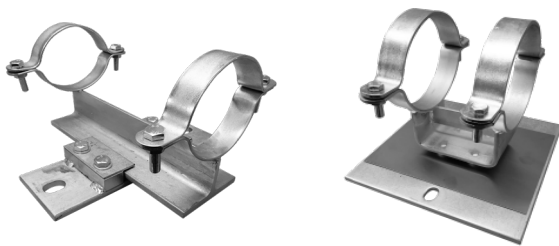
We Support Our Clients & Their Pipework

## Pipe Supports



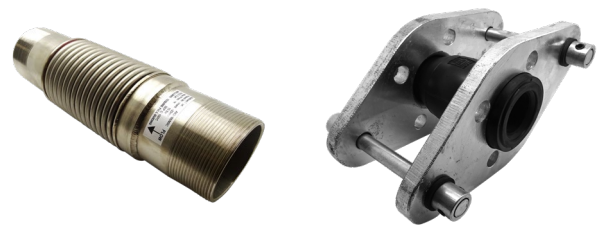
## Insulation Blocks

## Roof Supports



## Slide Guides & Skids

## Expansion Products



## Anti-Vibration Products

## Hoses



**Why Barnvale:**

- \* Conveniently situated a short distance from Central London with Distribution links to the rest of the UK.
  
- \* We have various manufacturing departments, producing an extensive range of Pipe Supports. Minimizing production times and third party intervention. Giving continuity of products, with data sheets and tech subs relevant to the supplied goods.
  
- \* We are a leading manufacturer of Hardwood Insulation Blocks, including® FSC certified.
  
- \* We are a main distributor of Phenolic Foam Insulation Blocks with common sizes and thicknesses in stock. Also offering Kingspan Kooltherm where required.
  
- \* We have qualified Engineers to provide design and technical assistance to all our clients. Backed up with PI Insurance.
  
- \* We are at the forefront of assisting Site Engineers and their Buying Teams with their problem solving and individual requirements, cost effectively and without delay.
  
- \* We can undertake Bracketry Calculations and advise on marked up drawings.
  
- \* We offer Pump Flexibles, Flexible Hoses and Expansion Compensators.
  
- \* We supply Anti-Vibration equipment from Inertia Bases to Spring Hangers, sized to suit the client's specific requirements.
  
- \* Full in-house design and fabrication capabilities for which includes Secondary Steelwork, Platforms, Chiller Bases and Walkways.

**Our Accreditations:**

**Barnvale Engineering & Supply Co Ltd**  
14 Creekmouth Industrial Estate,  
57 River Road,  
Barking, Essex  
IG11 0DA





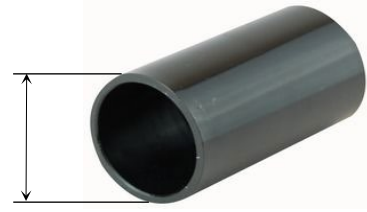
<b>Pipe Supports</b>	<b>Page 01, 02 &amp; 03</b>
<b>Supports To Suit Copper &amp; Stainless Pipework</b>	<b>Page 04</b>
<b>Lightweight Clips</b>	<b>Page 05 &amp; 06</b>
<b>Munsen Rings &amp; Back Plates</b>	<b>Page 06</b>
<b>Hardwood &amp; Phenolic Insulation Blocks</b>	<b>Page 07</b>
<b>Stone Wool &amp; Calcium Silicate Insulation Block</b>	<b>Page 08</b>
<b>Threaded Support Products</b>	<b>Page 09</b>
<b>Fixings &amp; Fasteners</b>	<b>Page 10</b>
<b>Roof Supports &amp; Prefabricated Bracketry</b>	<b>Page 11</b>
<b>Slide Guides</b>	<b>Page 12</b>
<b>Expansion</b>	<b>Page 13</b>
<b>Anti-Vibration</b>	<b>Page 14</b>
<b>Hoses</b>	<b>Page 15</b>
<b>Design, Calculations &amp; Fabrication</b>	<b>Page 15</b>



**Block Size i/d**  
(Inside Diameter)

=

**Pipe Size o/d**  
(Outside Diameter)



Block i/d Pipe o/d	Mild Steel	Copper	Mapress		TruBore Stainless	
	NB	Cu	Carbon	Stainless	ISO	Metric
015mm o/d		15mm cu		12mm		
018mm o/d				15mm		15mm
020mm o/d			15mm			
022mm o/d	15mm nb	22mm cu		20mm	15mm	
024mm o/d			20mm			20mm
028mm o/d	20mm nb	28mm cu		25mm	20mm	
030mm o/d			25mm			
035mm o/d	25mm nb	35mm cu		32mm	25mm	32mm
037mm o/d			32mm			
042mm o/d	32mm nb	42mm cu		40mm	32mm	
044mm o/d			40mm			40mm
048mm o/d	40mm nb				40mm	
054mm o/d		54mm cu		50mm		50mm
056mm o/d			50mm			
060mm o/d	50mm nb				50mm	
063mm o/d						
067mm o/d		67mm cu				
069mm o/d						65mm
076mm o/d	65mm nb	76mm cu		65mm	65mm	
084mm o/d						80mm
089mm o/d	80mm nb			80mm	80mm	
104mm o/d						100mm
108mm o/d		108mm cu		100mm		
114mm o/d	100mm nb				100mm	
129mm o/d						125mm
133mm o/d		133mm cu				
140mm o/d	125mm nb				125mm	
154mm o/d						150mm
159mm o/d		159mm cu				
165mm o/d	150mm nb (Med)					
168mm o/d	150mm nb				150mm	
204mm o/d						200mm
220mm o/d	200mm nb				200mm	
254mm o/d						250mm
273mm o/d	250mm nb				250mm	
304mm o/d						300mm
324mm o/d	300mm nb				300mm	
356mm o/d	350mm nb				350mm	350mm
406mm o/d	400mm nb				400mm	400mm
457mm o/d	450mm nb				450mm	450mm
508mm o/d	500mm nb				500mm	500mm
559mm o/d	550mm nb					
610mm o/d	600mm nb				600mm	600mm

**Split Band Clips**



**Size NB**

- 15mm
- 20mm
- 25mm
- 32mm
- 40mm
- 50mm
- 65mm
- 80mm
- 100mm
- 125mm
- 150mm
- 175mm
- 200mm
- 225mm
- 250mm
- 300mm
- 350mm
- 400mm
- 450mm
- 500mm
- 550mm
- 600mm

**Anchors & Guides**



**Size NB**

- 15mm
- 20mm
- 25mm
- 32mm
- 40mm
- 50mm
- 65mm
- 80mm
- 100mm
- 125mm
- 150mm
- 175mm
- 200mm
- 225mm
- 250mm
- 300mm
- 350mm
- 400mm
- 450mm
- 500mm
- 550mm
- 600mm

**Standard & Extended U Bolts**



**Size NB**

- 15mm
- 20mm
- 25mm
- 32mm
- 40mm
- 50mm
- 65mm
- 80mm
- 100mm
- 125mm
- 150mm
- 175mm
- 200mm
- 225mm
- 250mm
- 300mm
- 350mm
- 400mm
- 450mm
- 500mm
- 550mm
- 600mm

**Bossed Split Band Clips**



**Size NB**

- 15mm
- 20mm
- 25mm
- 32mm
- 40mm
- 50mm
- 65mm
- 80mm
- 100mm
- 125mm
- 150mm
- 175mm
- 200mm
- 225mm
- 250mm
- 300mm

**Holderbats**



**Size NB**

- 15mm
- 20mm
- 25mm
- 32mm
- 40mm
- 50mm
- 65mm
- 80mm
- 100mm
- 125mm
- 150mm

**Roller Chair & Guides**



**Size NB**

- 15mm
- 20mm
- 25mm
- 32mm
- 40mm
- 50mm
- 65mm
- 80mm
- 100mm
- 125mm
- 150mm
- 175mm
- 200mm
- 225mm
- 250mm
- 300mm
- 350mm
- 400mm
- 450mm
- 500mm
- 550mm
- 600mm

**Filbows FM & UL Approved**



**Size NB**

- 15mm
- 20mm
- 25mm
- 32mm
- 40mm
- 50mm
- 65mm
- 80mm
- 100mm
- 125mm
- 150mm
- 200mm

**Single Roller Brackets**



**Size NB**

- 15mm
- 20mm
- 25mm
- 32mm
- 40mm
- 50mm
- 65mm
- 80mm
- 100mm
- 125mm
- 150mm
- 175mm
- 200mm
- 225mm
- 250mm
- 300mm
- 350mm
- 400mm
- 450mm
- 500mm
- 550mm
- 600mm

**Roller & Chairs**



**Size NB**

- 15mm
- 20mm
- 25mm
- 32mm
- 40mm
- 50mm
- 65mm
- 80mm
- 100mm
- 125mm
- 150mm
- 175mm
- 200mm
- 225mm
- 250mm
- 300mm
- 350mm
- 400mm
- 450mm
- 500mm
- 550mm
- 600mm

**Various Supports To Suit Insulation To Suit Block O/D**



**Split Band Clips**



**Saddles**



**Standard U Bolts**



**Extended U Bolts**



**Bossed Split Band Clips**

54mm

60mm

65mm

70mm

76mm

83mm

89mm

95mm

102mm

108mm

114mm

121mm

127mm

133mm

139mm

146mm

152mm

159mm

168mm

173mm

178mm

186mm

193mm

199mm

208mm

219mm

225mm

232mm

244mm

252mm

259mm

264mm

273mm

283mm

290mm

299mm

308mm

316mm

323mm

332mm

344mm

356mm

363mm

373mm

384mm

394mm

406mm

416mm

423mm

435mm

444mm

456mm

**Various Supports To Suit Insulation To Suit Block O/D**



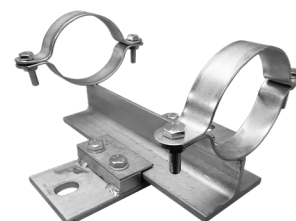
**Roller Chair & Guides**



**Single Roller Brackets**



**Roller & Chairs**



**Slide Guides**



**Skids**

54mm

60mm

65mm

70mm

76mm

83mm

89mm

95mm

102mm

108mm

114mm

121mm

127mm

133mm

139mm

146mm

152mm

159mm

168mm

173mm

178mm

186mm

193mm

199mm

208mm

219mm

225mm

232mm

244mm

252mm

259mm

264mm

273mm

283mm

290mm

299mm

308mm

316mm

323mm

332mm

344mm

356mm

363mm

373mm

384mm

394mm

406mm

416mm

423mm

435mm

444mm

456mm

**Split Band Clips**



**Size Cu**

- 15mm
- 22mm
- 28mm
- 35mm
- 42mm
- 54mm
- 67mm
- 76mm
- 108mm
- 133mm
- 159mm

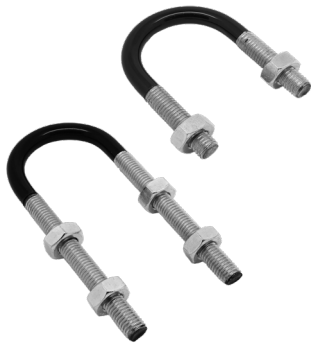
**Anchors & Guides**



**Size Cu**

- 15mm
- 22mm
- 28mm
- 35mm
- 42mm
- 54mm
- 67mm
- 76mm
- 108mm
- 133mm
- 159mm

**U Bolts Standard & Extended**



**Size Cu**

- 15mm
- 22mm
- 28mm
- 35mm
- 42mm
- 54mm
- 67mm
- 76mm
- 108mm
- 133mm
- 159mm

**Poly Prop Dels To Suit**



**Size To Suit**

- 15mm
- 22mm
- 28mm
- 35mm
- 42mm
- 54mm
- 67mm
- 76mm
- 108mm
- 133mm
- 159mm

**Bossed Split Bands**



**Size Cu**

- 15mm
- 22mm
- 28mm
- 35mm
- 42mm
- 54mm
- 67mm
- 76mm
- 108mm
- 133mm
- 159mm

**Roller Chair & Guides**



**Size Cu**

- 15mm
- 22mm
- 28mm
- 35mm
- 42mm
- 54mm
- 67mm
- 76mm
- 108mm
- 133mm
- 159mm

**Single Roller Brackets**



**Size Cu**

- 15mm
- 22mm
- 28mm
- 35mm
- 42mm
- 54mm
- 67mm
- 76mm
- 108mm
- 133mm
- 159mm

**Roller & Chairs**



**Size Cu**

- 15mm
- 22mm
- 28mm
- 35mm
- 42mm
- 54mm
- 67mm
- 76mm
- 108mm
- 133mm
- 159mm



**Lightweight Unlined Clips**



- Size**
- 19 - 23mm
  - 23 - 28mm
  - 26 - 30mm
  - 32 - 35mm
  - 39 - 43mm
  - 45 - 51mm
  - 54 - 58mm
  - 60 - 65mm
  - 67 - 71mm
  - 74 - 82mm
  - 82 - 89mm
  - 90 - 98mm
  - 93 - 101mm
  - 102 - 109mm
  - 109 - 117mm
  - 116 - 125mm
  - 129 - 141mm
  - 136 - 146mm
  - 142 - 154mm
  - 158 - 169mm
  - 168 - 177mm

**Unlined Heavy Duty Clips**



- Size**
- 88 - 97
  - 93 - 100
  - 101 - 109
  - 110 - 118
  - 116 - 126
  - 130 - 141
  - 136 - 145
  - 144 - 154
  - 159 - 165
  - 167 - 173
  - 176 - 182
  - 188 - 194
  - 199 - 205
  - 207 - 216
  - 219 - 226
  - 227 - 236
  - 244 - 250
  - 251 - 261
  - 267 - 273

**Lightweight Lined Clips**



- Size**
- 13 - 20mm
  - 17 - 23mm
  - 21 - 26mm
  - 26 - 30mm
  - 33 - 37mm
  - 40 - 46mm
  - 48 - 53mm
  - 53 - 59mm
  - 60 - 66mm
  - 67 - 77mm
  - 75 - 84mm
  - 83 - 93mm
  - 94 - 104mm
  - 102 - 111mm
  - 109 - 119mm
  - 122 - 135mm
  - 128 - 139mm
  - 135 - 148mm
  - 151 - 164mm
  - 158 - 170mm

**Lined Heavy Duty Clips**



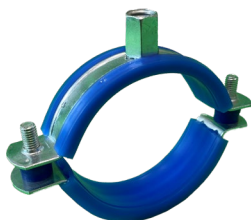
- Size**
- 60 - 69mm
  - 75 - 81mm
  - 83 - 91mm
  - 102 - 112mm
  - 122 - 138mm
  - 153 - 164mm
  - 196 - 209mm

**Lightweight S/Steel Clips**



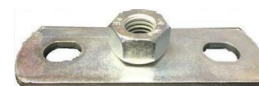
- Size**
- 15 - 19mm
  - 20 - 25mm
  - 26 - 30mm
  - 32 - 36mm
  - 38 - 43mm
  - 47 - 51mm
  - 53 - 58mm
  - 60 - 64mm
  - 68 - 72mm
  - 75 - 80mm
  - 81 - 86mm
  - 87 - 92mm
  - 99 - 105mm
  - 107 - 112mm
  - 113 - 118mm
  - 125 - 130mm
  - 138 - 142mm
  - 159 - 166mm

**Lightweight Lined Non Grip Clips**



- Size**
- 16mm
  - 20mm
  - 25mm
  - 32mm
  - 40mm
  - 50mm
  - 56mm
  - 63mm

**Mild Steel Backing Plate**



- Size**
- m8 / m10

**Lightweight Unlined Clips**



**Size**

- 14 - 18mm
- 19 - 23mm
- 23 - 29mm
- 29 - 35mm
- 41 - 48mm
- 48 - 54mm
- 54 - 62mm
- 62 - 72mm
- 73 - 83mm
- 83 - 93mm
- 93 - 103mm
- 103 - 113mm
- 113 - 123mm
- 123 - 133mm
- 133 - 143mm
- 143 - 153mm
- 155 - 165mm
- 165 - 175mm
- 174 - 184mm
- 184 - 195mm
- 195 - 205mm
- 207 - 218mm
- 210 - 220mm
- 217 - 227mm
- 220 - 230mm



**Munsen Rings Self Colour & Galv**



**Size NB**

- 15mm
- 20mm
- 25mm
- 32mm
- 40mm
- 50mm
- 65mm
- 80mm
- 100mm

**Screw To Wall Self Colour & Galv**



**Size NB**

- 15mm
- 20mm
- 25mm
- 32mm
- 40mm
- 50mm

**Back Plates Self Colour & Galv**



**Size**

- m10
- m12

**Lightweight Lined Clips**



**Size**

- 12 - 20mm
- 21 - 26mm
- 26 - 30mm
- 33 - 37mm
- 40 - 46mm
- 48 - 53mm
- 53 - 59mm
- 60 - 66mm
- 67 - 77mm
- 75 - 84mm
- 83 - 93mm
- 94 - 104mm
- 102 - 111mm
- 109 - 119mm
- 128 - 139mm
- 135 - 148mm
- 151 - 164mm
- 158 - 170mm
- 215 - 225mm

**Munsen Rings Brass**



**Size Cu**

- 15mm
- 22mm
- 28mm
- 35mm
- 42mm
- 54mm

**Screw To Wall Brass**



**Size Cu**

- 15mm
- 22mm
- 28mm
- 35mm
- 42mm
- 54mm

**Back Plates Brass**



**Size**

- m10

**Hardwood Load Bearing Block (FSC® Certified)**

Temperature Limits: -15 to +120 °C.

Suitable For CHW Pipework

Density: 380 - 450 kg/m<sup>2</sup>

Pipe o/d Range: 15mm - 1112mm

Thickness: 15mm, 20mm, 25mm, 30mm, 35mm, 40mm, 45mm, 50mm, 60mm, 65mm & 80mm

Standard Lengths: 50mm & 100mm

Separate literature available on request.

ITTO Hardwood Load Bearing Blocks also available.

This load bearing block can be supplied with a wide range of supports. See page 3 for details.

**Phenolic Load Bearing Block**

Temperature Limits: -180 to +120 °C.

Suitable For LTHW Pipework. Non-reactive bore coated for use on all pipes including copper.

Density: 80 - 120 kg/m<sup>2</sup>

Pipe o/d Range: 15mm - 456mm

Thickness: 15mm, 20mm, 25mm, 30mm, 35mm, 40mm, 45mm, 50mm, 63mm, 75mm & 100mm

Separate literature available on request.

This load bearing block can be supplied with a wide range of supports. See page 3 for details.

**Kingspan Phenolic Load Bearing Block**

Temperature Limits: -180 to +120 °C.

Suitable For LTHW Pipework. Non-reactive bore coated for use on all pipes including copper.

Density: 60 - 120 kg/m<sup>2</sup>

Pipe o/d Range: 15mm - 456mm

Thickness: 15mm, 20mm, 25mm, 30mm, 35mm, 40mm, 45mm, 50mm, 63mm, 75mm & 100mm

Separate literature available on request.

This load bearing block can be supplied with a wide range of supports. See page 3 for details.

**Sheet Metal Sleeves**

Length: 100mm, 125mm, 150mm, 200mm, 250mm & 300mm Long.

Thickness: 20-24 swg

Used to effectively spread the supported load and enhances lagging facilities and vapour seal.

**BPS-200 Stonewool Load Bearing Blocks**

Temperature Limit: Max. 600 °C.

Suitable For Various Pipework Systems

Pipe o/d Range: 15mm - 610mm

Thickness Range: 20mm - 100mm

Standard Lengths: 80mm & 100mm

Separate literature available on request.

This load bearing block can be supplied with a wide range of supports. See page 3 for details.

**Calcium Silicate Lined Load Bearing Blocks**

Temperature Limit: Max. 600 °C.

Suitable For Various Pipework Systems

Pipe o/d Range: 15mm - 610mm

Thickness Range: 20mm - 150mm

Standard Length: 100mm

This load bearing block can be supplied with a wide range of supports. See page 3 for details.

**Calcium Silicate Load Bearing Blocks**

Temperature Limit: Max. 600 °C.

Suitable For Various Pipework Systems

Pipe o/d Range: 15mm - 610mm

Thickness Range: 20mm - 150mm

Standard Length: 50mm & 100mm

Separate literature available on request.

This load bearing block can be supplied with a wide range of supports. See page 3 for details.

**Rocklap Load Bearing Blocks**

Temperature Limit: Max. 250 °C.

Suitable For Various Pipework Systems


Pipe o/d Range: 15mm - 406mm


Thickness Range: 20mm - 100mm


Standard Lengths: 80mm & 100mm

Separate literature available on request.


This load bearing block can be supplied with a wide range of supports. See page 3 for details.


Eye Bolts	Size
	m10 x 80mm
	m10 x 150mm
	m12 x 80mm
	m12 x 150mm
	m16 x 150mm
	m20 x 150mm

Threaded Studding	Size
	m8 x 1m
	m10 x 1m
	m12 x 1m
	m16 x 1m
	m20 x 1m
	m24 x 1m

Reducers	Size
	m8F / m10M
	m10F / m12M
	m12F / m10M

Stud Caps	Size To Suit
	m10
	m12
	m16
	m20
	m24


Link Eyes	Size To Suit
	m8 / m6
	m8 / m8
	m10 / m10
	m10 / m12
	m12 / m10
	m12 / m12
	m12 / m16
	m16 / m16

Studding Connectors	Size
	m8
	m10
	m12
	m16
	m20
	m24

Threaded Link Eyes	Size
	m8 / m8
	m10 / m10
	m12 / m12


Flange Clamps	Size
	m8
	m10
	m12

Ball Swivels / Hangers	Size
	m8
	m10
	m12


Hemispherical Cups & Washers	Size
	m10
	m12
	m16
	m20
	m24


Bow Nuts	Size
	m10
	m12
	m16
	m20
	m24

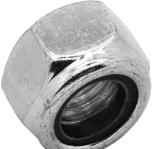
Purlin Clips	Size
	m10
	m12

Full Nuts	Size
	m6
	m8
	m10
	m12
	m16
	m20
	m24

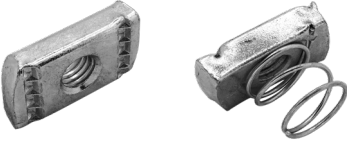
Washers	Size
	m6
	m8
	m10
	m12
	m16
	m20
	m24

Half Nuts	Size
	m6
	m8
	m10
	m12
	m16
	m20
	m24


Penny Washers	Size
	m6 x 25mm
	m6 x 30mm
	m8 x 25mm
	m8 x 30mm
	m10 x 25mm
	m10 x 30mm
	m12 x 30mm
	m12 x 40mm


Lock Nuts	Size
	m6
	m8
	m10
	m12
	m16
	m20
	m24

Square Plate Washers	Size
	m6
	m8
	m10
	m12
	m16
	m20
	m24

Channel Nuts	Size
	m6
	m8
	m10
	m12
	m16

Wedge Nuts	Size
	m6
	m8
	m10
	m12

HT Sets & Bolts	Size
	m6 x 30
	m10 x 30
	m10 x 40
	m12 x 40
	m12 x 50
	m16 x 50
	m16 x 60
	m20 x 70
m24 x 90	

Drop In Anchors	Size
	m8 x 30mm
	m10 x 30mm
	m10 x 40mm
	m12 x 50mm
	m16 x 65mm
	m20 x 80mm
	m20 x 80mm

**Prefabricated Bracketry**



**H Frame Support Set**



**Pyramid H Frame Base**



**Pyramid Adjustable Support Base**



**Pyramid Adjustable Roller Support Base**



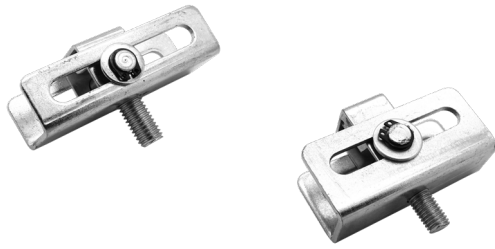
**Pyramid Bridge Support Base**



**Pyramid Fixed Support Base**



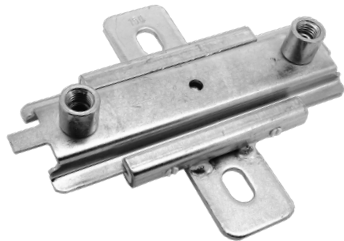
**Module Slide Guide (Single m10 Thread)**



**Slide Guide 150mm Long (Single m10 / m12 Boss)**



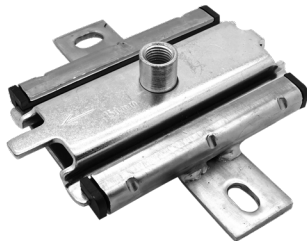
**Slide Guide 165mm Long (Double m10 / m12 Boss)**



**Slide Guide 165mm Long (Double m10 / m12 Boss)**



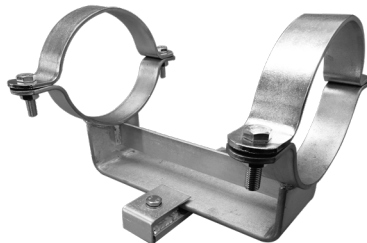
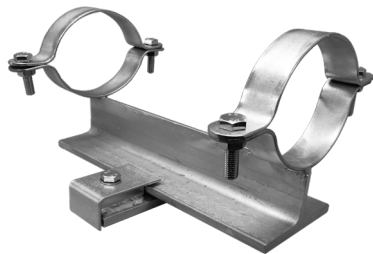
**Slide Guide 150mm Long (Single m12 / m16 Boss)**



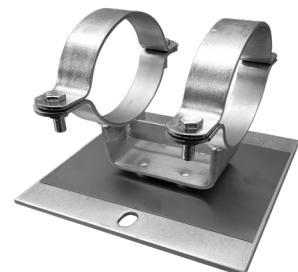
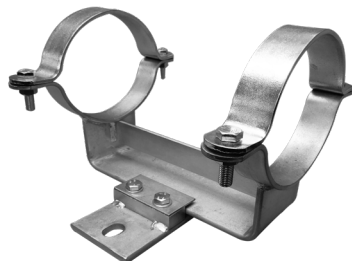
**Slide Guide 275mm Long (Double m12 / m16 Boss)**



**Slide Guides & Skids (15mm nb - 150mm nb Pipework)**



**Slide Guides & Skids (150mm nb - 600mm nb Pipework)**





**Untied Pump Flexible Unit**



**Size NB**

- 32mm
- 40mm
- 50mm
- 65mm
- 80mm
- 100mm
- 125mm
- 150mm
- 200mm
- 250mm
- 300mm

**Tied Pump Flexible Unit**



**Size NB**

- 32mm
- 40mm
- 50mm
- 65mm
- 80mm
- 100mm
- 125mm
- 150mm
- 200mm
- 250mm
- 300mm

**Rubber Union**



**Size NB**

- 20mm
- 25mm
- 32mm
- 40mm
- 50mm

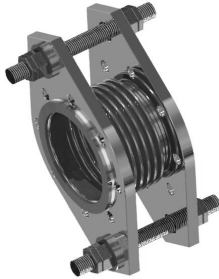
**Single Axial Compensator**



**Size NB**

- 15mm
- 20mm
- 25mm
- 32mm
- 40mm
- 50mm

**Stainless Steel Pump Flexible Unit**



**Size NB**

- 32mm
- 40mm
- 50mm
- 65mm
- 80mm
- 100mm
- 125mm
- 150mm
- 200mm
- 250mm
- 300mm

**Single Axial Compensator**



**Size NB**

- 32mm
- 40mm
- 50mm
- 65mm
- 80mm
- 100mm
- 125mm
- 150mm
- 200mm
- 250mm
- 300mm

**Angular Expansion Joint**



**Size NB**

- 32mm
- 40mm
- 50mm
- 65mm
- 80mm
- 100mm
- 125mm
- 150mm
- 200mm
- 250mm
- 300mm

**Fully Articulated Expansion Joint**



**Size NB**

- 32mm
- 40mm
- 50mm
- 65mm
- 80mm
- 100mm
- 125mm
- 150mm
- 200mm
- 250mm
- 300mm

**Spring Hangers**



**Design Load**

- 14 Kg
- 23 Kg
- 28 Kg
- 37 Kg
- 46 Kg
- 60 Kg
- 69 Kg
- 82 Kg
- 91 Kg
- 137 Kg
- 173 Kg
- 190 Kg
- 228 Kg
- 287 Kg
- 341 Kg
- 363 Kg
- 445 Kg
- 456 Kg
- 500 Kg
- 637 Kg
- 772 Kg
- 864 Kg
- 910 Kg
- 1091 Kg

**Restricted Spring Mounts**



**Design Load**

- 100 Kg
- 200 Kg
- 300 Kg
- 400 Kg
- 500 Kg
- 600 Kg
- 800 Kg
- 1000 Kg
- 1200 Kg
- 1600 Kg
- 1750 Kg
- 1950 Kg
- 2350 Kg
- 2550 Kg
- 2750 Kg

**Inertia Bases Manufactured To Pump Requirements**



**Captive Spring Mounts**



**Loading**

- 23 Kg
- 37 Kg
- 60 Kg
- 91 Kg
- 137 Kg
- 228 Kg
- 286 Kg
- 341 Kg
- 363 Kg
- 445 Kg
- 546 Kg
- 637 Kg
- 772 Kg
- 864 Kg

**Hanger Boxes c/w Neoprene Mounts**



**Loading**

- 2.5 - 5 Kg
- 4 - 8 Kg
- 7 - 14 Kg
- 9 - 18 Kg
- 14 - 28 Kg
- 18 - 60 Kg
- 20 - 40 Kg
- 27 - 54 Kg
- 36 - 72 Kg
- 54 - 108 Kg
- 90 - 180 Kg
- 135 - 270 Kg
- 180 - 360 Kg



**Anti-Vibration Neoprene Pads**



**Thickness**

- 12mm
- 24mm

**Anti-Vibration Cork Pads**



**Thickness**

- 10mm
- 20mm

**BSP Taper Male x Straight Female**



**Compression x BSP Taper Male**



**Elbow Female x Straight Female**



**Compression c/w Iso Valve x Straight Female**



**Compression x Straight Female**



**Straight Female x Straight Female**



**Compression Ends**



**Pushfit Ends**



**BSP Taper Male Ends**



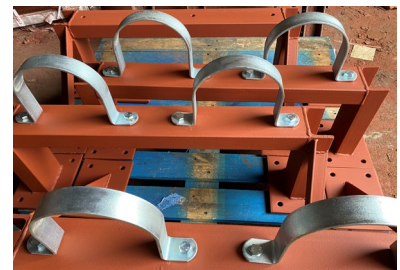
**Standpipe Ends**



**Design, Calculations & Fabrication Capabilities**

Our expertise in providing support solutions means that we are able to offer a variety of specialist services.

Design, Detailing, Drafting And Fabricating, which can be tailored to suit your particular needs.



Contact our team directly on: [design@barnvale.co.uk](mailto:design@barnvale.co.uk)



## Account Application Is Easy:

Fill out the details below and email to ([accounts@barnvale.co.uk](mailto:accounts@barnvale.co.uk))

Alternatively you can fill out the form on line at <http://www.barnvale.co.uk/accounts>

## Account Application Form:

Name:

Company:

Address:

Email Address:

Telephone:

Company Registration No.

VAT No.

Type Of Work Undertaken:

Credit Limit Required:

## How To Find Us



**Barnvale Eng & Supply Co**  
**14 Creekmouth Ind Est**  
**57 River Road**  
**Barking**  
**Essex**  
**IG11 0DA**

**Office Hours:**  
**7.00am to 4.30pm**

**Collection Times:**  
**6.30am to 4.00pm**