



BARNVALE

DESIGN AND INNOVATION

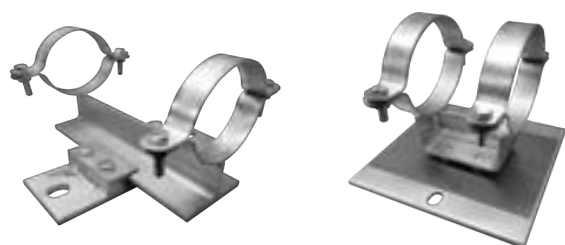
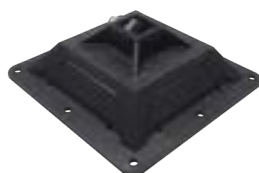
We Support Our Clients & Their Pipework

Pipe Supports



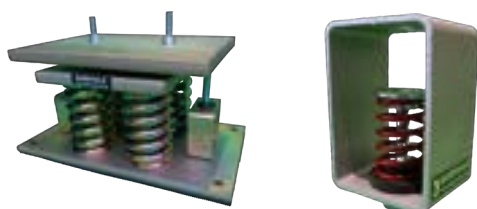
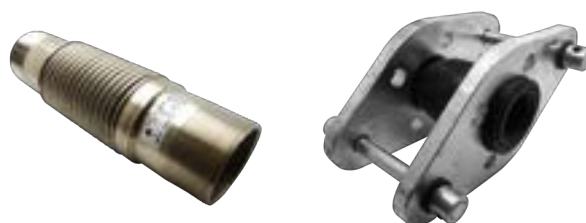
Insulation Blocks

Roof Supports



Slide Guides & Skids

Expansion Products



Anti-Vibration Products

Hoses



Why Barnvale:

- * Conveniently situated a short distance from Central London with Distribution links to the rest of the UK.
- * We have various manufacturing departments, producing an extensive range of Pipe Supports.
Minimizing production times and third party intervention.
Giving continuity of products, with data sheets and tech subs relevant to the supplied goods.
- * We are a leading manufacturer of Hardwood Insulation Blocks, including FSC certified.
- * We are a main distributor of Phenolic Foam Insulation Blocks with common sizes and thicknesses in stock. Also offering Kingspan Kooltherm where required.
- * We have qualified Engineers to provide design and technical assistance to all our clients.
Backed up with PI Insurance.
- * We are at the forefront of assisting Site Engineers and their Buying Teams with their problem solving and individual requirements, cost effectively and without delay.
- * We can undertake Bracketry Calculations and advise on marked up drawings.
- * We offer Pump Flexibles, Flexible Hoses and Expansion Compensators.
- * We supply Anti-Vibration equipment from Inertia Bases to Spring Hangers, sized to suit the client's specific requirements.
- * Full in-house design and fabrication capabilities for which includes Secondary Steelwork, Platforms, Chiller Bases and Walkways.

Our Accreditations:

Barnvale Engineering & Supply Co Ltd
14 Creekmouth Industrial Estate,
57 River Road,
Barking, Essex
IG11 0DA





Pipe Supports

Page 01, 02 & 03

Supports To Suit Copper & Stainless Pipework Page 04

Lightweight Clips

Page 05 & 06

Munsen Rings & Back Plates

Page 06

Hardwood & Phenolic Insulation Blocks

Page 07

Stone Wool & Calcium Silicate Insulation Block Page 08

Threaded Support Products

Page 09

Fixings & Fasteners

Page 10

Roof Supports & Prefabricated Bracketry

Page 11

Slide Guides

Page 12

Expansion

Page 13

Anti-Vibration

Page 14

Hoses

Page 15

Design, Calculations & Fabrication

Page 15



Block Size i/d
(Inside Diameter)

=

Pipe Size o/d
(Outside Diameter)



Block i/d Pipe o/d	Mild Steel	Copper	Mapress		TruBore Stainless	
	NB	Cu	Carbon	Stainless	ISO	Metric
015mm o/d		15mm cu		12mm		
018mm o/d				15mm		15mm
020mm o/d			15mm			
022mm o/d	15mm nb	22mm cu		20mm	15mm	
024mm o/d			20mm			20mm
028mm o/d	20mm nb	28mm cu		25mm	20mm	
030mm o/d			25mm			
035mm o/d	25mm nb	35mm cu		32mm	25mm	32mm
037mm o/d			32mm			
042mm o/d	32mm nb	42mm cu		40mm	32mm	
044mm o/d			40mm			40mm
048mm o/d	40mm nb				40mm	
054mm o/d		54mm cu		50mm		50mm
056mm o/d			50mm			
060mm o/d	50mm nb				50mm	
063mm o/d						
067mm o/d		67mm cu				
069mm o/d						65mm
076mm o/d	65mm nb	76mm cu		65mm	65mm	
084mm o/d						80mm
089mm o/d	80mm nb			80mm	80mm	
104mm o/d						100mm
108mm o/d		108mm cu		100mm		
114mm o/d	100mm nb				100mm	
129mm o/d						125mm
133mm o/d		133mm cu				
140mm o/d	125mm nb				125mm	
154mm o/d						150mm
159mm o/d		159mm cu				
165mm o/d	150mm nb (Med)					
168mm o/d	150mm nb				150mm	
204mm o/d						200mm
220mm o/d	200mm nb				200mm	
254mm o/d						250mm
273mm o/d	250mm nb				250mm	
304mm o/d						300mm
324mm o/d	300mm nb				300mm	
356mm o/d	350mm nb				350mm	350mm
406mm o/d	400mm nb				400mm	400mm
457mm o/d	450mm nb				450mm	450mm
508mm o/d	500mm nb				500mm	500mm
559mm o/d	550mm nb					
610mm o/d	600mm nb				600mm	600mm

Split Band Clips
Size NB


15mm
20mm
25mm
32mm
40mm
50mm
65mm
80mm
100mm
125mm
150mm
175mm
200mm
225mm
250mm
300mm
350mm
400mm
450mm
500mm
550mm
600mm

Anchors & Guides
Size NB

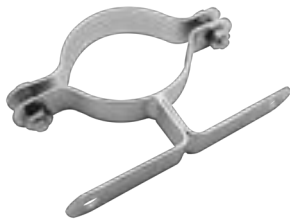

15mm
20mm
25mm
32mm
40mm
50mm
65mm
80mm
100mm
125mm
150mm
175mm
200mm
225mm
250mm
300mm
350mm
400mm
450mm
500mm
550mm
600mm

Standard & Extended U Bolts
Size NB


15mm
20mm
25mm
32mm
40mm
50mm
65mm
80mm
100mm
125mm
150mm
175mm
200mm
225mm
250mm
300mm
350mm
400mm
450mm
500mm
550mm
600mm

Bossed Split Band Clips
Size NB


15mm
20mm
25mm
32mm
40mm
50mm
65mm
80mm
100mm
125mm
150mm
175mm
200mm
225mm
250mm
300mm

Holderbats
Size NB


15mm
20mm
25mm
32mm
40mm
50mm
65mm
80mm
100mm
125mm
150mm

Roller Chair & Guides
Size NB


15mm
20mm
25mm
32mm
40mm
50mm
65mm
80mm
100mm
125mm
150mm
175mm
200mm
225mm
250mm
300mm
350mm
400mm
450mm
500mm
550mm
600mm

Filbows FM & UL Approved
Size NB







15mm
20mm
25mm
32mm
40mm
50mm
65mm
80mm
100mm
125mm
150mm
200mm




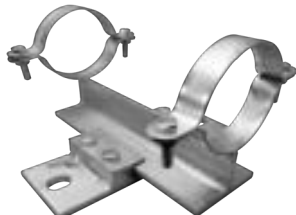

Single Roller Brackets
Size NB


15mm
20mm
25mm
32mm
40mm
50mm
65mm
80mm
100mm
125mm
150mm
175mm
200mm
225mm
250mm
300mm
350mm
400mm
450mm
500mm
550mm
600mm

Roller & Chairs
Size NB


15mm
20mm
25mm
32mm
40mm
50mm
65mm
80mm
100mm
125mm
150mm
175mm
200mm
225mm
250mm
300mm
350mm
400mm
450mm
500mm
550mm
600mm

Various Supports To Suit Insulation	To Suit Block O/D
	54mm
	60mm
	65mm
	70mm
	76mm
	83mm
	89mm
	95mm
	102mm
	108mm
	114mm
	121mm
	127mm
	133mm
	139mm
	146mm
	152mm
	159mm
	168mm
	173mm
	178mm
	186mm
	193mm
	199mm
	208mm
	219mm
	225mm
	232mm
	244mm
	252mm
	259mm
	264mm
	273mm
	283mm
	290mm
	299mm
	308mm
	316mm
	323mm
	332mm
	344mm
	356mm
	363mm
	373mm
	384mm
	394mm
	406mm
	416mm
	423mm
	435mm
	444mm
	456mm

Various Supports To Suit Insulation	To Suit Block O/D
	54mm
	60mm
	65mm
	70mm
	76mm
	83mm
	89mm
	95mm
	102mm
	108mm
	114mm
	121mm
	127mm
	133mm
	139mm
	146mm
	152mm
	159mm
	168mm
	173mm
	178mm
	186mm
	193mm
	199mm
	208mm
	219mm
	225mm
	232mm
	244mm
	252mm
	259mm
	264mm
	273mm
	283mm
	290mm
	299mm
	308mm
	316mm
	323mm
	332mm
	344mm
	356mm
	363mm
	373mm
	384mm
	394mm
	406mm
	416mm
	423mm
	435mm
	444mm
	456mm

Split Band Clips

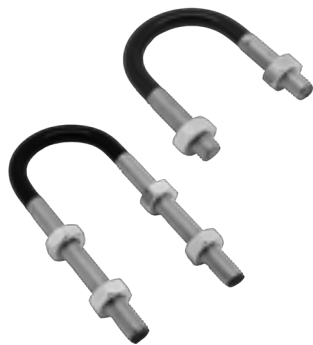
Size Cu

15mm
22mm
28mm
35mm
42mm
54mm
67mm
76mm
108mm
133mm
159mm

Anchors & Guides

Size Cu

15mm
22mm
28mm
35mm
42mm
54mm
67mm
76mm
108mm
133mm
159mm

U Bolts Standard & Extended

Size Cu

15mm
22mm
28mm
35mm
42mm
54mm
67mm
76mm
108mm
133mm
159mm

Poly Prop Dels To Suit

Size To Suit

15mm
22mm
28mm
35mm
42mm
54mm
67mm
76mm
108mm
133mm
159mm

Bossed Split Bands

Size Cu

15mm
22mm
28mm
35mm
42mm
54mm
67mm
76mm
108mm
133mm
159mm

Roller Chair & Guides

Size Cu

15mm
22mm
28mm
35mm
42mm
54mm
67mm
76mm
108mm
133mm
159mm

Single Roller Brackets

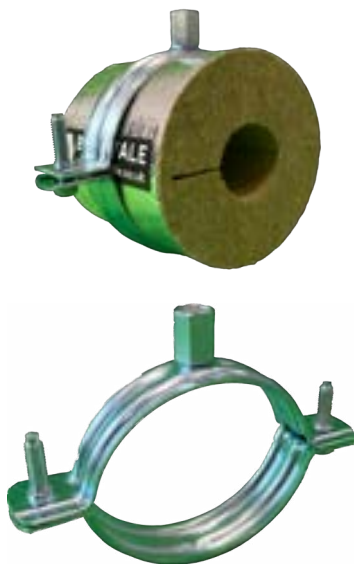
Size Cu

15mm
22mm
28mm
35mm
42mm
54mm
67mm
76mm
108mm
133mm
159mm

Roller & Chairs

Size Cu

15mm
22mm
28mm
35mm
42mm
54mm
67mm
76mm
108mm
133mm
159mm

Lightweight Unlined Clips
Size


15 - 20mm

19 - 23mm

23 - 28mm

26 - 30mm

32 - 35mm

39 - 43mm

45 - 51mm

53 - 61mm

62 - 67mm

68 - 74mm

75 - 81mm

83 - 93mm

93 - 103mm

103 - 113mm

113 - 123mm

123 - 133mm

133 - 143mm

143 - 153mm

154 - 162mm

163 - 172mm

173 - 183mm

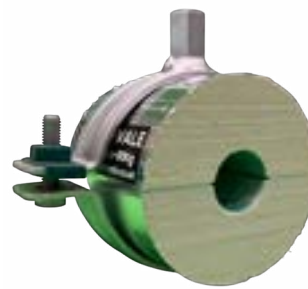
184 - 194mm

195 - 205mm

206 - 216mm

217 - 225mm

220 - 230mm

Unlined Heavy Duty Clips
Size


19 - 23mm

25 - 30mm

31 - 36mm

37 - 42mm

40 - 45mm

47 - 52mm

53 - 58mm

59 - 65mm

66 - 71mm

72 - 78mm

79 - 85mm

86 - 92mm

98 - 106mm

118 - 116mm

116 - 123mm

125 - 133mm

132 - 140mm

148 - 154mm

159 - 169mm

173 - 183mm

192 - 202mm

206 - 219mm

217 - 227mm

229 - 241mm

244 - 254mm

254 - 264mm

Lightweight Lined Clips
Size


12 - 20mm

21 - 26mm

26 - 30mm

33 - 37mm

40 - 46mm

48 - 53mm

53 - 59mm

60 - 66mm

67 - 77mm

75 - 84mm

83 - 93mm

94 - 104mm

102 - 111mm

109 - 119mm

128 - 139mm

135 - 148mm

151 - 164mm

158 - 170mm

215 - 225mm

Lightweight Lined Clips
Size


15 - 19mm

19 - 23mm

25 - 29mm

30 - 35mm

40 - 45mm

46 - 51mm

53 - 59mm

59 - 64mm

65 - 71mm

72 - 78mm

79 - 85mm

86 - 92mm

101 - 109mm

108 - 116mm

125 - 133mm

132 - 140mm

159 - 169mm

194 - 204mm

217 - 227mm

Lightweight S/Steel Clips
Size


15 - 19mm

20 - 25mm

26 - 30mm

32 - 36mm

38 - 43mm

47 - 51mm

53 - 58mm

60 - 64mm

68 - 72mm

75 - 80mm

81 - 86mm

87 - 92mm

99 - 105mm

107 - 112mm

113 - 118mm

125 - 130mm

138 - 142mm

159 - 166mm

Munsen Rings Self Colour & Galv
Size NB


15mm

20mm

25mm

32mm

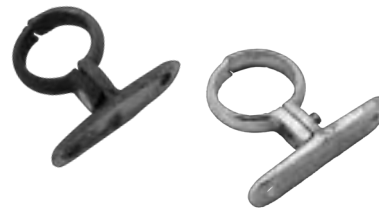
40mm

50mm

65mm

80mm

100mm

Screw To Wall Self Colour & Galv
Size NB


15mm

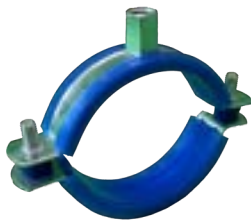
20mm

25mm

32mm

40mm

50mm

Lightweight Lined Non Grip Clips
Size


16mm

20mm

25mm

32mm

40mm

50mm

56mm

Munsen Rings Brass
Size Cu


15mm

22mm

28mm

35mm

42mm

54mm

Mild Steel Backing Plate
Size


m8 / m10

Screw To Wall Brass
Size Cu


15mm

22mm

28mm

35mm

42mm

54mm

Back Plates Self Colour & Galv
Size


m10

m12

Back Plates Brass
Size


m10

Hardwood Load Bearing Block (FSC® Certified)

Temperature Limits: -15 to +120 °C.

Suitable For CHW Pipework

Density: 380 - 450 kg/m²

Pipe o/d Range: 15mm - 1112mm

Thickness: 15mm, 20mm, 25mm, 30mm, 35mm, 40mm, 45mm, 50mm, 60mm, 65mm, 70mm & 80mm

Standard Lengths: 80mm & 100mm

Separate literature available on request.

ITTO Hardwood Load Bearing Blocks also available.

This load bearing block can be supplied with a wide range of supports. See page 3 for details.

Phenolic Load Bearing Block

Temperature Limits: -180 to +120 °C.

Suitable For LTHW Pipework. Non-reactive bore coated for use on all pipes including copper.

Density: 80 - 120 kg/m²

Pipe o/d Range: 15mm - 456mm

Thickness: 15mm, 20mm, 25mm, 30mm, 35mm, 40mm, 45mm, 50mm, 63mm, 75mm & 100mm

Separate literature available on request.

This load bearing block can be supplied with a wide range of supports. See page 3 for details.

Kingspan Phenolic Load Bearing Block

Temperature Limits: -180 to +120 °C.

Suitable For LTHW Pipework. Non-reactive bore coated for use on all pipes including copper.

Density: 60 - 120 kg/m²

Pipe o/d Range: 15mm - 456mm

Thickness: 15mm, 20mm, 25mm, 30mm, 35mm, 40mm, 45mm, 50mm, 63mm, 75mm & 100mm

Separate literature available on request.

This load bearing block can be supplied with a wide range of supports. See page 3 for details.

Sheet Metal Sleeves

Length: 100mm, 125mm, 150mm, 200mm, 250mm & 300mm Long.

Thickness: 20-24 swg

Used to effectively spread the supported load and enhances lagging facilities and vapour seal.

BPS-200 Stonewool Load Bearing Blocks

Temperature Limit: Max. 600 °C.

Suitable For Various Pipework Systems

Pipe o/d Range: 15mm - 159mm Recommended. Thereafter please call to discuss.

Thickness Range: 20mm - 100mm

Standard Lengths: 80mm & 100mm

Separate literature available on request.

This load bearing block can be supplied with a wide range of supports. See page 3 for details.

Calcium Silicate Lined Load Bearing Blocks

Temperature Limit: Max. 600 °C.

Suitable For Various Pipework Systems

Pipe o/d Range: 15mm - 610mm

Thickness Range: 20mm - 150mm

Standard Length: 100mm

This load bearing block can be supplied with a wide range of supports. See page 3 for details.

Calcium Silicate Load Bearing Blocks

Temperature Limit: Max. 600 °C.

Suitable For Various Pipework Systems

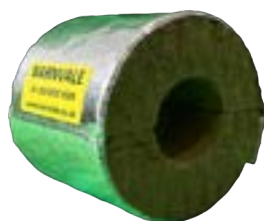
Pipe o/d Range: 15mm - 610mm

Thickness Range: 20mm - 150mm

Standard Length: 50mm & 100mm

Separate literature available on request.

This load bearing block can be supplied with a wide range of supports. See page 3 for details.

Rocklap Load Bearing Blocks

Temperature Limit: Max. 250 °C.

Suitable For Various Pipework Systems

Pipe o/d Range: 15mm - 406mm

Thickness Range: 20mm - 100mm

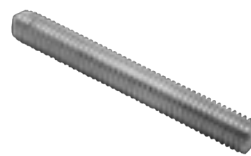
Standard Lengths: 80mm & 100mm

Separate literature available on request.

This load bearing block can be supplied with a wide range of supports. See page 3 for details.

Eye Bolts
Size


m10 x 80mm
 m10 x 150mm
 m12 x 80mm
 m12 x 150mm
 m16 x 150mm
 m20 x 150mm

Threaded Studding
Size


m8 x 1m
 m10 x 1m
 m12 x 1m
 m16 x 1m
 m20 x 1m
 m24 x 1m

Reducers
Size


m8F / m10M
 m10F / m12M
 m12F / m10M

Stud Caps
Size To Suit


m10
 m12
 m16
 m20
 m24

Link Eyes
Size To Suit


m8 / m6
 m8 / m8
 m10 / m10
 m10 / m12
 m12 / m10
 m12 / m12
 m12 / m16
 m16 / m16

Studding Connectors
Size


m8
 m10
 m12
 m16
 m20
 m24

Threaded Link Eyes
Size


m8 / m8
 m10 / m10
 m12 / m12

Flange Clamps
Size


m8
 m10
 m12

Ball Swivels / Hangers
Size


m8
 m10
 m12

Hemispherical Cups & Washers
Size


m10
 m12
 m16
 m20
 m24

Bow Nuts
Size


m10
 m12
 m16
 m20
 m24

Purlin Clips
Size


m10
 m12

Full Nuts
Size


m6
 m8
 m10
 m12
 m16
 m20
 m24

Washers
Size


m6
 m8
 m10
 m12
 m16
 m20
 m24

Half Nuts
Size

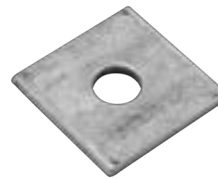

m6
 m8
 m10
 m12
 m16
 m20
 m24

Penny Washers
Size


m6 x 25mm
 m6 x 30mm
 m8 x 25mm
 m8 x 30mm
 m10 x 25mm
 m10 x 30mm
 m12 x 30mm
 m12 x 40mm

Lock Nuts
Size

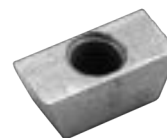

m6
 m8
 m10
 m12
 m16
 m20
 m24

Square Plate Washers
Size


m6
 m8
 m10
 m12
 m16
 m20
 m24

Channel Nuts
Size


m6
 m8
 m10
 m12
 m16

Wedge Nuts
Size


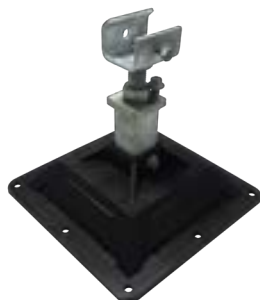
m6
 m8
 m10
 m12

HT Sets & Bolts
Size

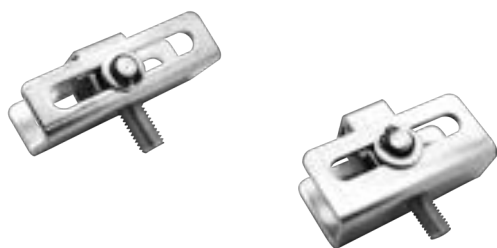

m6 x 30
 m10 x 30
 m10 x 40
 m12 x 40
 m12 x 50
 m16 x 50
 m16 x 60
 m20 x 70
 m24 x 90

Drop In Anchors
Size

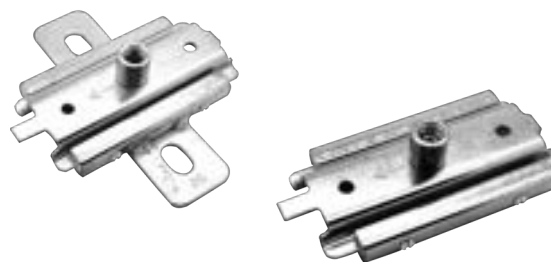

m8 x 30mm
 m10 x 30mm
 m10 x 40mm
 m12 x 50mm
 m16 x 65mm
 m20 x 80mm
 m20 x 80mm

Prefabricated Bracketry**H Frame Support Set****Pyramid H Frame Base****Pyramid Adjustable Support Base****Pyramid Adjustable Roller Support Base****Pyramid Bridge Support Base****Pyramid Fixed Support Base**

Module Slide Guide (Single m10 Thread)



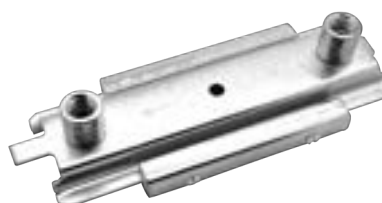
Slide Guide 150mm Long (Single m10 / m12 Boss)



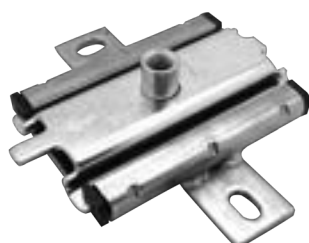
Slide Guide 165mm Long (Double m10 / m12 Boss)



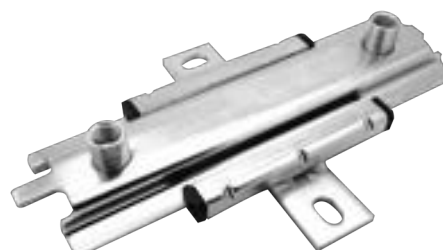
Slide Guide 165mm Long (Double m10 / m12 Boss)



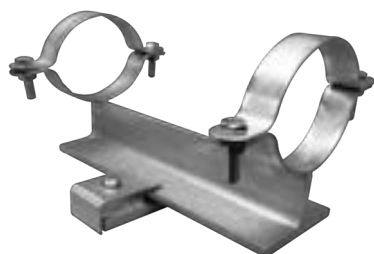
Slide Guide 150mm Long (Single m12 / m16 Boss)



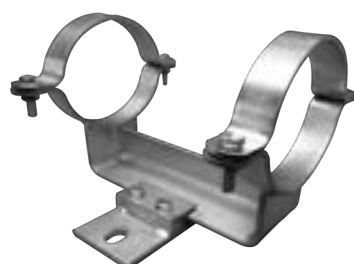
Slide Guide 275mm Long (Double m12 / m16 Boss)



Slide Guides & Skids (15mm nb - 150mm nb Pipework)



Slide Guides & Skids (150mm nb - 600mm nb Pipework)



Untied Pump Flexible Unit

Size NB

32mm
 40mm
 50mm
 65mm
 80mm
 100mm
 125mm
 150mm
 200mm
 250mm
 300mm

Tied Pump Flexible Unit

Size NB

32mm
 40mm
 50mm
 65mm
 80mm
 100mm
 125mm
 150mm
 200mm
 250mm
 300mm

Rubber Union

Size NB

20mm
 25mm
 32mm
 40mm
 50mm

Single Axial Compensator

Size NB

15mm
 20mm
 25mm
 32mm
 40mm
 50mm

Stainless Steel Pump Flexible Unit

Size NB

32mm
 40mm
 50mm
 65mm
 80mm
 100mm
 125mm
 150mm
 200mm
 250mm
 300mm

Single Axial Compensator

Size NB

32mm
 40mm
 50mm
 65mm
 80mm
 100mm
 125mm
 150mm
 200mm
 250mm
 300mm

Angular Expansion Joint

Size NB

32mm
 40mm
 50mm
 65mm
 80mm
 100mm
 125mm
 150mm
 200mm
 250mm
 300mm

Fully Articulated Expansion Joint

Size NB

32mm
 40mm
 50mm
 65mm
 80mm
 100mm
 125mm
 150mm
 200mm
 250mm
 300mm

Spring Hangers 15mm Deflection
Design Load


15 Kg
30 Kg
45 Kg
80 Kg
100 Kg

Spring Hangers 25mm Deflection
Design Load

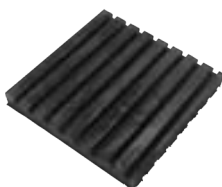

25 Kg
36 Kg
60 Kg
90 Kg
136 Kg
230 Kg
340 Kg
455 Kg
545 Kg
640 Kg

Spring Hangers 50mm Deflection
Design Load


50 Kg
150 Kg
200 Kg
250 Kg
300 Kg
350 Kg
400 Kg

Captive Spring Mounts
Loading


23 Kg
37 Kg
60 Kg
91 Kg
137 Kg
228 Kg
286 Kg
341 Kg
363 Kg
445 Kg
546 Kg
637 Kg
772 Kg
864 Kg

Anti-Vibration Neoprene Pads
Thickness


12mm
24mm

Restricted Spring Mounts
Design Load


100 Kg
200 Kg
300 Kg
400 Kg
500 Kg
600 Kg
800 Kg
1000 Kg
1200 Kg
1600 Kg
1750 Kg
1950 Kg
2350 Kg
2550 Kg
2750 Kg

Inertia Bases Manufactured To Pump Requirements

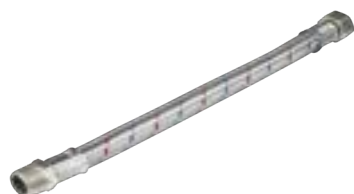
Hanger Boxes c/w Neoprene Mounts
Loading


2.5 - 5 Kg
4 - 8 Kg
7 - 14 Kg
9 - 18 Kg
14 - 28 Kg
18 - 60 Kg
20 - 40 Kg
27 - 54 Kg
36 - 72 Kg
54 - 108 Kg
90 - 180 Kg
135 - 270 Kg
180 - 360 Kg

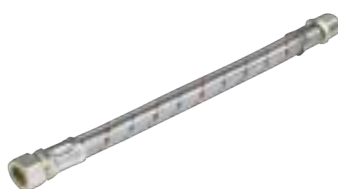
Anti-Vibration Cork Pads
Thickness


10mm
20mm

BSP Taper Male x Straight Female



Compression x BSP Taper Male



Elbow Female x Straight Female



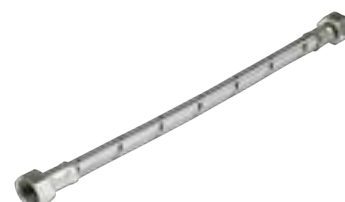
Compression c/w Iso Valve x Straight Female



Compression x Straight Female



Straight Female x Straight Female



Compression Ends



Pushfit Ends



BSP Taper Male Ends



Standpipe Ends



Design, Calculations & Fabrication Capabilities

Our expertise in providing support solutions means that we are able to offer a variety of specialist services.

Design, Detailing, Drafting And Fabricating, which can be tailored to suit your particular needs.



Contact our team directly on: design@barnvale.co.uk



Account Application Is Easy:

Fill out the details below and email to (accounts@barnvale.co.uk)

Alternatively you can fill out the form on line at <http://www.barnvale.co.uk/accounts>

Account Application Form:

Name:

Company:

Address:

Email Address:

Telephone:

Company Registration No.

VAT No.

Type Of Work Undertaken:

Credit Limit Required:

How To Find Us



Barnvale Eng & Supply Co
14 Creekmouth Ind Est
57 River Road
Barking
Essex
IG11 0DA

Office Hours:
7.00am to 4.30pm

Collection Times:
6.30am to 4.00pm